

# JERICHO park

Where



your

begins

Welcome to the start of something big,  
the first of its kind.

Jericho – your gateway to the future and your foundation in the now. Rising at the crossroads of 200th Street and 80th Avenue, Jericho stands as the centre of it all, in Langley's new core where vibrant community and connection converge.

Jericho Park 

Lifestyle 

Neighbourhood 

Interiors 

Developer Story 

future



# JERICHO

LANGLEY'S NEW  
URBAN CENTRE

A landmark community that blends lifestyle, culture, convenience, and recreation into a hub unlike any other. With unprecedented architecture and community-focused design, Jericho is Langley's most transformative real estate venture to date – reshaping Langley's skyline and elevating its urban vitality.

Jericho comes to life with Jericho Park, Jericho Square, and Jericho District – a dynamic choice of 1-3 Bedroom+Den homes calling you to vibrant, central living. We're designing a bold backdrop for Langley's next chapter – and yours. At Jericho, you're choosing more than a home, you're choosing a future that's full to the brim.

Envisioned and crafted by local developer Essence Properties, Jericho is what a truly interconnected community should look like. Every aspect is designed to enrich the fabric of community life, like the convenience of The Shops at Jericho's retail, dining, and entertainment right at your doorstep.

The pace of nature.  
The pulse of a city.



JERICO'S  
PIONEERING  
PHASE

# park

BE ONE  
OF THE FIRST



Be one of the first to experience a dynamic way to live and thrive in Langley. Jericho Park marks the start of living in the city's new urban heartbeat, offering the vibrant lifestyle you're looking for.

At Jericho Park, you'll find a perfect balance of nature and city, connection and independence, convenience and culture. It's easy to plant roots here and achieve the future you want, in a community you're proud to join.

## Discovery at your front door



## Everyday an adventure

# A bold invitation to new beginnings

As the first homes at Jericho, Jericho Park's 1-3+Den homes begin an exciting era of evolution and urban growth in Langley. It's central urban living – reimagined. Where nature, community and convenience come together; where we celebrate new beginnings and what's to come.

Life at Jericho Park offers a diverse choice of recreation and amenities just outside your door. Generous community greenspace creates a natural backdrop for time outdoors, while amenities and gathering spots at The Shops at Jericho make errands and meet-ups quick and easy. For destinations farther away in Langley or Metro Vancouver, a future Rapid Bus transit stop on 200th Street and 80th Avenue will connect to the upcoming Expo Line SkyTrain expansion on Fraser Highway. And if you drive, quick access to major thoroughfares makes travel a breeze.

Active or relaxed, you can choose-your-own-adventure here.

In the hands of architect Ciccozzi Architecture and interior designer The Collaborative Design Studio, Jericho Park has a welcoming presence that's approachable and well-considered. As Jericho's first homes, Jericho Park echoes the community's overall contemporary, urban energy but also has its own relaxed, nature-meets-urban feel. A timeless architectural style with a hint of West Coast appeal, Jericho Park's exterior complements its fresh, classic interiors.

CICCOZZI ARCHITECTURE

"We arrive at every design through a process of discovery and collaboration instead of starting with a predetermined style. The result of this ethos is enduring and innovative architecture with lasting value for our clients and communities. For Jericho and Jericho Park, our partnership with Essence Properties informed a design that expresses both diversity and balance – foundational aspects of life in this community."

THE COLLABORATIVE DESIGN STUDIO

"Our approach is all about designing beautiful homes you can live in. Working closely with Essence Properties, we designed contemporary, low-maintenance interiors that allow residents the opportunity to live in elevated comfort, every day. Where home is a backdrop for enjoying the moments that really matter."



The team at Ciccozzi Architecture chose black brick and Hardie siding, and white and grey panels to create depth and contrast to the facade. The choice of a double-height entrance with batten details is a warm welcome home and once you step into the lobby, its spaciousness creates a sense of inviting elegance.

Within each home, The Collaborative Design Studio complemented the approachable feel of the exterior by designing a streamlined yet classic aesthetic. Two colour palettes allow homeowners to choose the canvas that will best reflect their taste, either the light 'Willow' or the dark 'Onyx' schemes. Fresh-feeling, natural materials in white, greys, and light woodgrain create calm, an oasis within the urban bustle.



Shared amenities such as Jericho Park's two outdoor BBQ areas and special occasion spaces invite lively celebrations.

# Life with community at its core



Community is central to the vibrant, balanced lifestyle at Jericho Park. Essence Properties envisioned an expansive central courtyard and landscaped pathways as an idyllic, everyday gathering place – designed to bring everyone together. Neighbourly exchanges, family time, or solo downtime, the courtyard encourages community at its best.



Fitness perks like the gym and yoga studio, and the multi-sport simulator room foster connection amongst active, like-minded neighbours.

# park SOCIAL CLUB

A modern 3,920 sq ft multifunctional community space designed for work, fitness, and play, featuring:

### YOGA AREA

Dedicated space with yoga mats and equipment for stretching and mindfulness exercises

### FITNESS ROOM

State-of-the-art equipment, including cardio machines and weight training gear

### LARGE SOCIAL LOUNGE

Fully-equipped kitchen, varied seating, pool table, TV, and direct access to an outdoor BBQ area – ideal for events and gatherings



### WORK/STUDY ROOM

Versatile space with private Zoom rooms, a large meeting table, and comfortable seating for collaborative work

### MULTI-SPORT SIMULATOR ROOM

Equipped with a sports simulator for practicing your golf swings and much more

### MULTI-PURPOSE ROOM

Large TV, fridge, sink, pantry – perfect for intimate gatherings or private meetings

# Living

# heights

PUTTING GREEN



SEATING

SEATING

Enjoy views from the rooftop terrace with a putting green, loungers, outdoor cooking stations, urban garden plots, and plenty of seating. Perfect for gatherings, sunbathing, or a quiet evening under the stars.

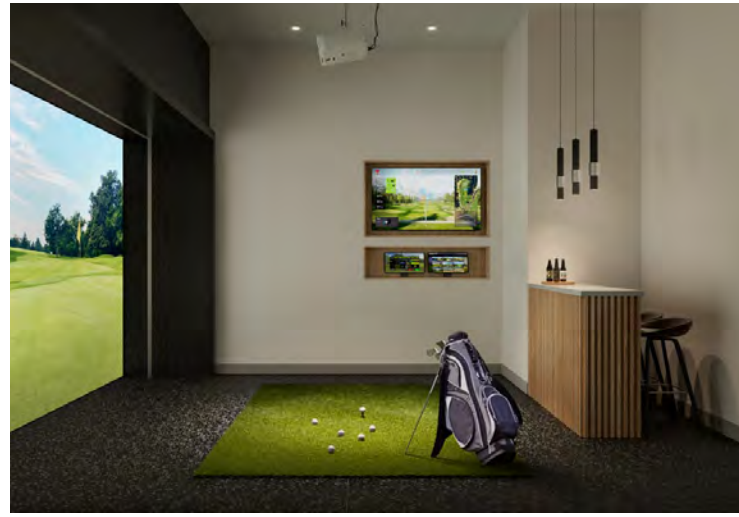
URBAN GARDEN PLOTS

BBQ AREA

LOUNGERS

# at

# new



# A better way to live

HOME IS WHERE  
LIFE AND LEISURE  
FIND PERFECT BALANCE

Langley is a bustling city, with a diversity and culture that continues to grow. With central Langley living at Jericho Park, home becomes your foundation for a full and evolving life. New hobbies and new adventures. Knowing your neighbours. Discovering new favourite coffee shops, brunch stops, and local boutiques.

The community's 'Greenway Boulevard' is your gateway to more – more to see, more to do, more to discover. Winding through Jericho, Greenway Boulevard leads to The Shops at Jericho, and towards excitement at the Langley Events Centre and beyond. It's also where a restorative walk or a quiet moment with a good book can refresh your day.

Inside, Jericho Park's shared fitness amenities also motivate wellness, while dedicated study, work and Zoom rooms foster productive work hours for balanced living.



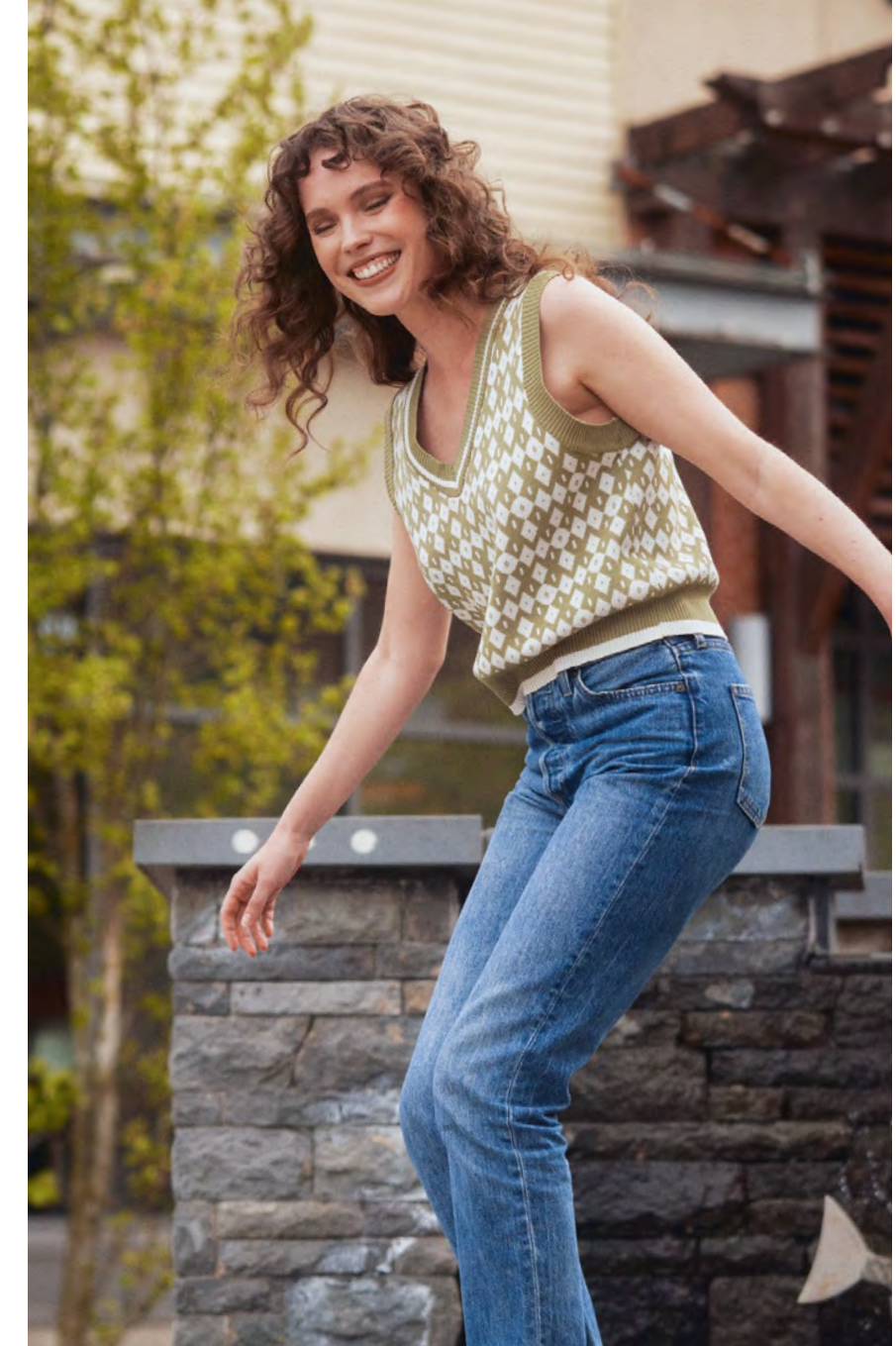


# Connecting you near and far

At Jericho Park, easy connectivity enhances every moment, enlivening your everyday experiences. ‘Greenway Boulevard’ offers a journey of discovery – where you’ll bump into friends, where kids learn to ride bikes, and where neighbours cheer as one at the Langley Events Centre.

With major thoroughfares and a future SkyTrain Station, travel around Langley and into Metro Vancouver is as seamless as it is swift. From Jericho Park, you’ll find endless possibilities to connect with ease.

# For a life full to the brim



Jericho Park is where you'll find Langley's new centrepiece, and your next chapter. Greenspaces and shared amenities, The Shops at Jericho, and easy connectivity – every aspect inspires a balanced, dynamic lifestyle. Where recreation is boundless and community brightens your everyday. Here, a canvas for life's milestones, from forging new friendships to setting down family roots to growing into the golden years.

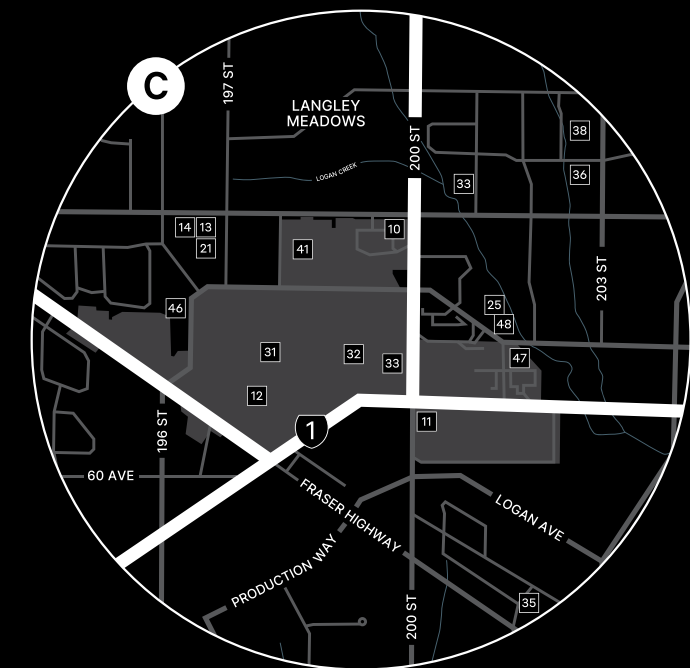
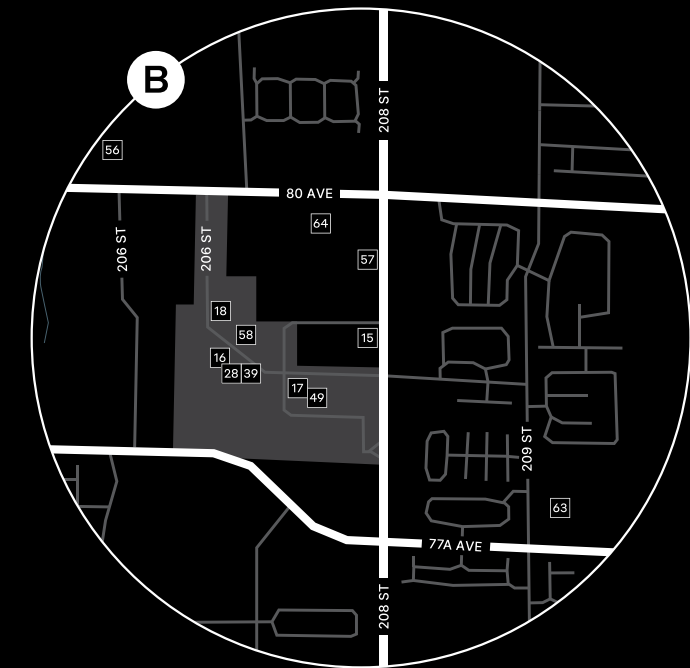
Langley welcomes you as a city rich with history and as an attractive place to live, work, and play. It's a place alive with diversity and culture, amenities and recreation. As Langley's new heartbeat, Jericho sits at the centre of it all.

Jericho offers prime connectivity for discovering all that Langley has to offer. The city's rustic farms and plentiful parks, lively arts and thrilling sports, and every kind of shopping – it's all easy to enjoy from Jericho. Life here is as convenient as it is exciting.

As a local developer, Essence Properties has a deep interest in the future of Langley, crafting a landmark community that elevates the city's urban vitality. Jericho introduces a new way to live: a close-knit neighbourhood within a bustling city. A community that feels like home now and for generations to come.



# In your neighbourhood



## Shops & Groceries

29. PROVISIONS MARKET + GIFTS
30. FRESH ST. MARKET
31. WILLOWBROOK SHOPPING CENTRE
32. SAFEWAY
33. M&M FOOD MARKET
34. BC LIQUOR
35. SAVE ON FOODS
36. LONDON DRUGS
37. COSTCO WHOLESALE
38. WALMART SUPERCENTRE
39. HAKAM'S YOUR INDEPENDENT GROCER
40. SAVE ON FOODS
41. REAL CANADIAN SUPERSTORE
42. SHOPPERS DRUG MART

## Recreation

43. LANGLEY EVENTS CENTRE
44. WALNUT GROVE COMMUNITY CENTRE
45. PORT KELLS OUTDOOR POOL
46. ORANGETHEORY FITNESS
47. CLUB16 TREVOR LINDEN FITNESS
48. F45 TRAINING
49. OXYGEN YOGA & FITNESS
50. GOLD'S GYM
51. EXTREME AIR PARK
52. THE REDWOODS GOLF COURSE
53. CINEPLEX CINEMAS
54. LANGLEY TENNIS CENTRE
55. BEACH VOLLEYBALL COURTS
56. THE TENNIS CENTRE LANGLEY

## Schools

57. ABC PRESCHOOL ACADEMY
58. TINY HOPPERS EARLY LEARNING
59. TRINITY WESTERN UNIVERSITY
60. R.E. MOUNTAIN SECONDARY SCHOOL
61. PETER EWART MIDDLE SCHOOL
62. YORKSON CREEK MIDDLE SCHOOL
63. RICHARD BULPITT ELEMENTARY SCHOOL
64. WILLOWBROOK ELEMENTARY

## Restaurants

01. SIDEBAR GRILL
02. KAI JAPANESE RESTAURANT
03. PIZZA GARDEN LOUNGE
04. S+L KITCHEN & BAR
05. MOXIES LANGLEY RESTAURANT
06. THE ITALIAN OSTERIA & CHEESEBAR
07. BROWNS SOCIALHOUSE
08. THE BARLEY MERCHANT TAPROOM & KITCHEN
09. THE KEG STEAKHOUSE + BAR
10. EARLS KITCHEN + BAR
11. CACTUS CLUB CAFE
12. OEB BREAKFAST CO.
13. HAVEN KITCHEN + BAR
14. TOWNHALL
15. THE HARD BEAN BRUNCH CO.
16. NOMA SUSHI JAPANESE RESTAURANT
17. THE MAD ITALIAN PIZZA & PINTS
18. WOKING DRAGON
19. SUSHI GIO JAPANESE RESTAURANT
20. OAK & THORNE
21. CAMP BEER CO

## Cafes

22. ARTIGIANO
23. BLACKSMITH BAKERY
24. ARCHR COFFEE + BAKERY
25. DELPHI CAFE
26. STARBUCKS
27. STARBUCKS
28. MATTU'S COFFEE & TEA

LANGLEY MEMORIAL HOSPITAL

# Sleek and timeless, with an inviting warmth

Step inside and feel instantly at home. The interiors at Jericho Park lean on a classic look, for approachable yet refined spaces. A subtle backdrop for showcasing your personal taste, start by choosing from two colour schemes – distinguished by light or dark cabinetry. Thoughtful pairings of vinyl oak plank flooring with cozy carpet, slim shaker cabinets with quartz countertops, and chrome with porcelain tiles blend style and durability.

## Homes that check all the boxes, and more

With a generous selection of floorplans ranging from 1 Bedroom to 3 Bedrooms+Den with 1 to 2 full bathrooms, there's a home for every lifestyle and life stage at Jericho Park. It's easy to find the home that calls your name.

CHOOSE FROM TWO  
COLOUR PALETTES

Homes also come in two colour schemes that centre around cabinetry tones: 'Willow' with light sand cabinets or 'Onyx' with charcoal-toned cabinets. Once you've made your palette selection, your home becomes your canvas – ready for personal decor touches to truly make your space your own.

## Every detail carefully considered

CUSTOM MILLWORK  
FOR ORGANIZATION

We've designed Jericho Park homes to include features that make everyday living more seamless and enjoyable. In all homes, open-concept living spaces and bedrooms have an airy, expansive feel. And with smart storage a priority in condo living, primary bedroom closets open to reveal built-in custom millwork – organizational systems that maximize square footage and keep everything in its place.

In larger floorplans, homes have added storage with a pantry. This extra space comes with sturdy wire shelving and more room to house kitchen essentials and daily staples.

Interiors at Jericho Park free you to flourish and grow, offering the space and time to cultivate what matters most to you.

Kitchens

made



for

living

Here, the heart of the home. Jericho Park kitchens are made for effortless gathering and cooking. From day-to-day meals to special feasts, a streamlined and efficient design creates an enjoyable space for your culinary adventures. The expansive island serves as added prep, entertaining, seating, and storage space; it even houses an integrated microwave for easy access.

Storage and organization is tucked away in slim, shaker-style cabinets with simple rail pulls and your choice of a light 'Willow' or deep 'Onyx' colour sets the tone for your entire home. Paired with a veined, white quartz countertop and chrome fixtures, your kitchen is both easy to maintain and sophisticated. And whether you're a novice cook or an experienced at-home chef, you'll enjoy the stainless steel Samsung appliance package that complements the contemporary way you live.

The kitchen also has room for a family-sized dining table and chairs. When a sit-down meal is on the menu and you want to connect, talk about your day, and savour what you've prepared.

# Cozy corners for memorable moments

For those times you want to unwind, your Jericho Park living room is the perfect venue. Movies or games nights, sports on TV, after-dinner conversations – settle in for meaningful moments with friends and family. Or recharge with some alone time, devouring a new bestseller or catching up on your favourite show.

## Living rooms designed for connecting



CONNECT  
RECHARGE  
RELAX

## Together or on your own



CLASSIC FINISHES SET  
A GRACEFUL TONE

## Bathrooms at Jericho Park combine form and function in a bright, minimal ambiance

Getting ready, day or evening, is a simple, beautiful pleasure in your Jericho Park bathroom. Both main and ensuite bathrooms feature a fresh, monochromatic palette of white, chrome, and glass for an aesthetic that will stand the test of time. Neutral hints from the Willow or Onyx cabinetry add softness, while grey-veined, large-format porcelain floor tile carries interest with its subtle patterning. Functionally, trusted Kohler fixtures and a high-efficiency Kohler toilet offer practical peace-of-mind.

Bathrooms come with the option of upgrading the framed ensuite glass shower to a frameless style or a bathtub enclosure.

“From our family to yours, we’ve crafted Jericho as a landmark neighbourhood, a gateway into the new Langley. It’s a hub designed for truly connected living, for now and for what’s to come.”

KEVIN DHALIWAL  
ESSENCE PROPERTIES

WE'RE LANGLEY  
LOCALS TOO

Our commitment to creating stronger communities extends beyond building homes. You'll find the Essence team volunteering in the community, championing our cities, and bringing people together. We're even part owners of the Vancouver Bandits.



We love

this place

Langley is our home, too – and we're here to stay. As a local developer, we love and celebrate where we live. Behind every Essence community, careful thought goes into enriching the Fraser Valley neighbourhoods we build in.

With Jericho, we've designed a community for the future of Langley, the city's new heartbeat of urban vitality. It's a central hub for connection and belonging, a place that inspires people to thrive and love where they live, just like we do. Each phase of Jericho, starting with Jericho Park, will reflect a new and nuanced way to discover what central Langley living has to offer.

Be one of the first to experience truly connected, convenient living – in Langley’s vibrant new core. Life at Jericho Park offers endless opportunities for recreation and adventure, connection and culture. It’s a gateway to Langley’s next era, and an inspiring place for your next chapter, too.

A sought-after destination, Langley offers plentiful amenities and expanding diversity. And as Langley Township continues as one of the fastest-growing areas in Metro Vancouver, the Jericho community is primed to become a hub of city vitality and connectivity.

Jericho Park is your smart, early investment in Langley’s up-and-coming urban centre. And with early interest, it’ll be easy to choose the home that fits your future.

NEW BEGINNINGS  
START HERE

New

here



beginnings

start



**ESSENCE**  
PROPERTIES